

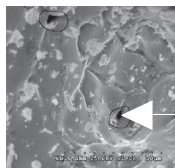
EXIDE

EL TUBULAR

The extra **POWER**
UPS Tubular Battery

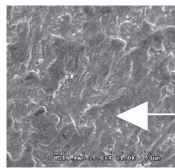


Low Maintenance • Last 3 Times Longer



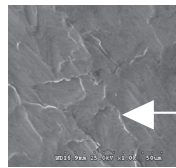
Big voids
Non uniform
micro
hardness

Gravity Casting



Small
voids
Very low
micro
hardness

Low Pressure
Casting 10 Bar



No
voids
Uniform
micro
hardness

High Pressure
Casting 150 Bar HADI

The new EL range are manufactured as per Exide's proprietary Törr Tubular technology using one of the world's most exclusive, advanced and state-of-the-art 'HADI' high pressure spine casting (at 100 bar) machines, which is not commonly available. With our hi-tech R&D center at Kolkata, Exide has developed the high-corrosion resistant and robust spine technology using the HADI process, which ensures a super fine grain structure, for strength, long life and highest reliability. It is also cadmium free.

Applications

• UPS System • Telecommunication Systems • Office Automation Equipment • Fire Alarm & Security Systems • Electronic PABX Systems • Cable Television Equipment • Electronic Attendance & Cash Registers • Process Instrumentation & Control • Railway Signalling • Power Plants & Substations • Cellular Phones & Pagers (Base Stations & Transmitters) • Geophysical Equipment

EXIDE EL RANGE OF TUBULAR MONOBLOC BATTERIES

| 4 YEARS WARRANTY PRODUCT | | | | | | | | | | | | | |
|--------------------------|------------------------------------|------------------|---|---|-----------------------|----------------------------|----------------------------------|---------------------------------|---------------|-----|---|-----------------------------|-----|
| Battery Type | Nominal Monoblock unit Voltage (V) | Capacity (AH) | | Charging Current for Initial Charging Amp | | Filled Battery Weight (KG) | Approx. Acid Qty. @1,240 Sp. Gr. | Maximum Overall Dimensions (MM) | | | Constant Potential limiting Current (Amp) | Trickle Charge Current (mA) | |
| | | 10HR 1.75V /Cell | 10HR 1.80V/Cell (Confirms to BIS 13369) | Starting 2.35V/- Cell | Finishing 2.75 V/Cell | | | ±5% | Litre/Battery | L | | W | H |
| 6EL40 | 12V | 40 | 38 | 5.0 | 2.5 | 18.05 | 4.80 | 262 | 173 | 240 | 10.0 | 40 | 160 |
| 6EL50 | 12V | 50 | 47 | 6.0 | 3.0 | 28.05 | 8.10 | 408 | 174 | 281 | 12.5 | 50 | 200 |
| 6EL60 | 12V | 60 | 57 | 7.0 | 3.5 | 29.9 | 8.79 | 408 | 174 | 281 | 15.0 | 60 | 240 |
| 6EL66 | 12V | 66 | 63 | 8.0 | 4.0 | 30.21 | 8.64 | 408 | 174 | 281 | 16.5 | 66 | 264 |
| 6EL75 | 12V | 75 | 70 | 9.0 | 4.5 | 30.5 | 8.60 | 408 | 174 | 281 | 18.8 | 75 | 300 |
| 6EL100 | 12V | 100 | 95 | 12.0 | 6.0 | 44.1 | 16.61 | 531 | 220 | 281 | 25.0 | 100 | 400 |
| 6EL120 | 12V | 120 | 114 | 15.0 | 7.5 | 56.5 | 22.58 | 500 | 187 | 421 | 30.0 | 120 | 480 |
| 6EL130 | 12V | 130 | 123 | 16.0 | 8.0 | 61.1 | 23.58 | 500 | 187 | 421 | 32.5 | 130 | 520 |
| 6EL150 | 12V | 150 | 142 | 18.0 | 9.0 | 60.9 | 21.56 | 500 | 187 | 421 | 37.5 | 150 | 600 |
| 6EL180 | 12V | 180 | 171 | 22.0 | 11.0 | 67.5 | 21.94 | 500 | 187 | 421 | 45.0 | 180 | 720 |
| 6EL200 | 12V | 200 | 190 | 24.0 | 12.0 | 76.0 | 28.00 | 500 | 187 | 421 | 50.0 | 200 | 800 |

Operational Settings:

For constant potential charging - Boost Voltage (max) : 2.40 Volts per cell, Float Voltage: 2.25 Volts per cell
Limit charging current (A) : 10-20% of C₁₀ capacity

Equalizing Charge:

An equalizing charge is a special charge given when non-uniformity in voltage/Sp. Gr. has developed between batteries. It is given to restore all batteries to a fully charged condition. Equalize charge should be done in every 6 months at the rate 3 to 4% constant current of C₁₀ capacity upto TOC voltage (@2.65 vpc) for 6 hours.

Statutory Notice:

All batteries contain lead, which is harmful for humans and environment. As per statutory requirements, the used battery must be returned to the authorized dealer, manufacturer or at the designated collection centres.

EXIDE

Head Office:

Kolkata 'Exide House', 59E Chowringhee Road, Kolkata - 700 020, Phone (033) 2283 2120/33/36/50/51/71/ 2238/39, Fax (033) 2283 2632/37

Corporate Marketing Office:

Kolkata 6A Hatibagan Road, Entally, Kolkata - 700 014, Phone (033) 01149541640, Fax (033) 2286 6186, E-mail: indlcare@exide.co.in

Regional Offices:

New Delhi: 'Exide House', 8/42 Kirtinagar Industrial Area, Opposite MDH Spice Factory, New Delhi - 110015, Phone: (011) 49541640

Chennai: Exide Industries Limited, New No. 824/2, Old No. 398, Third Floor, Anna Salai, Nandanam, Chennai - 600 035 (Before Hyundai Showroom), Phone (044) 23747900/914, Fax (044) 4907 5126

Mumbai: 'RAHEJAS', 5th Floor, 8C Main Avenue, V P Road, Santacruz (West), Mumbai - 400 054, Phone (022) 2646 5283/84, Fax (022) 2646 5042

Kolkata: 6A Hatibagan Road, Entally, Kolkata - 700 014, Phone (033) 2286 6158/6159, Fax (033) 23023600/22866158/59/93, E-mail: indlcare@exide.co.in

This catalogue is issued to provide outline information only and is not deemed to form part of an offer or contract. Our policy is one of continued improvement and we reserve the right to change details without prior notice.

E-mail: indlcare@exide.co.in, Visit us at www.exideindustries.com | Toll Free No. 1800-103-5454

PHX/EL /05-2022